



HAURAKI SUMMER SERIES 2019

RACE 3 - Cooks Beach

16 March 2019

Hosted by Whitianga Community Waka Ama

Venue: Cooks Beach, Mercury Bay

Distance: Novice/Junior W6 and W1/W2 8km, Senior W6 15km

Type: W1/W2/W6

Divisions: Men/Women/Mixed/Novice/Junior

Cost: Online Entry \$20 per senior, **\$25 to enter on day** \$15 per junior (one fee even if racing multiple times)

IMPORTANT REMINDER: Any races sanctioned by our national body requires that all paddlers are registered online before race day. We have been advised that this is a requirement and not a choice.

Because of this ANY ENTRIES made on the day will;

1) be \$25 per adult. (Online entry \$20)

2) require that you verify paddlers affiliation to Waka Ama NZ by producing your Waka Ama NZ ID at rego on race day.

If we are unable to verify your affiliation you will not be able to race.

Race 1 8km : Novice/Junior W6, all W1/W2

Race 2 15km : Women/Mixed W6

Race 3 15km : Men W6

Event Schedule:

8.30am Registration

9.15am Karakia

9.30am Race 1 briefing

10.00am Race 1 start
11.30am Race 2 briefing
12.00pm Race 2 start
1.30pm Race 3 briefing
2.00pm Race 3 start

How to enter:

Your club rep can enter you online, **this is our preferred option for safety.** once entry is in please make payments to:

Whitianga Community Services Trust 031578 0004256 00

Please use your team name, race number and division as reference

Hauraki Summer Series Events:

1ST. Sat 23 Feb

Te Whanau Waka Ama O Whangamata - Whangamata

2ND. Sat 9 Mar

Te Āputa Tira Hoe - Te Puru

3RD. Sat 16 Mar

Whitianga Community Waka Ama - Cooks Beach

4TH. Sat 6 Apr

Hauraki Waka Ama - Waihi

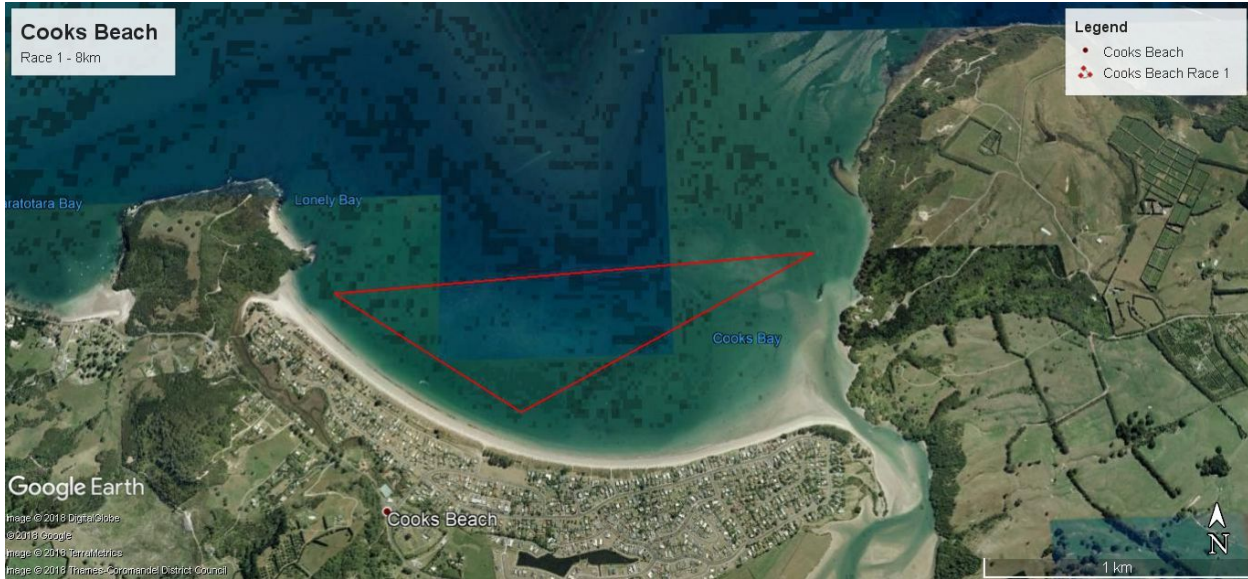
Series Points System:

1st 4 pts, 2nd - 3 points, 3rd - 2 points, 4th+ - 1 point

Teams have to participate in a minimum of 2 events to be eligible for series points.

Teams must race under same team name for all events to accumulate points. Series prizegiving will be hosted by Hauraki Waka Ama at conclusion of 4th event.

Race Course: Race 1 8km - go around course twice



Race Course: Races 2 & 3 15km - go around course twice



Tides:

Low 0901 0.7m
 High 1523 1.9m

Safety Equipment:

The following equipment must be carried by all waka and will be checked before racing

- 1 life jacket per paddler (must fit correctly)
- 2 bailers all W6 and 1 bailer for any non self draining W1/W2
- 2 spare paddles W6 and 1 spare paddle W1/W2
- Spray skirts - may not be required depending on conditions
- Cell phone or VHF Radio
- High Vis gear (shirt/hat or flag to assist visibility)